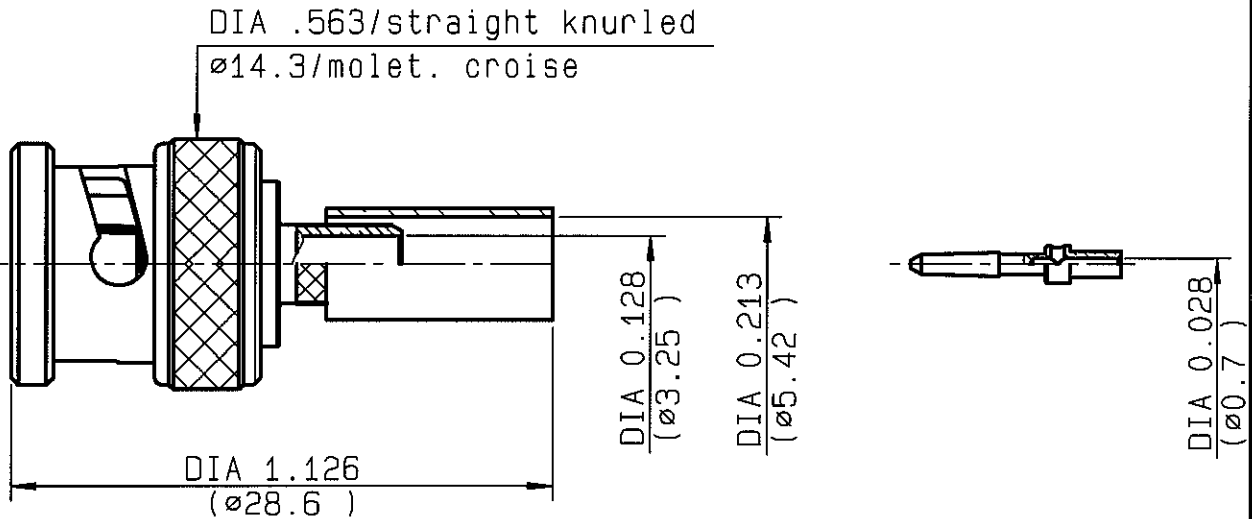


**STRAIGHT PLUG CRIMP TYPE  
CABLE 5/75 S**

**R142.082.027**  
**SERIES BNC 75**



NOMINAL IMPEDANCE	<b>75</b> $\Omega$
FREQUENCY RANGE	<b>0- 3</b> GHz
TEMPERATURE RATING	<b>-65/+165</b> °C
V.S.W.R	<b>1.15 + 0</b> x F(GHz)Maxi
RF INSERTION LOSS	<b>0.115</b> $\sqrt{F}$ (GHz) dB Maxi
VOLTAGE RATING	<b>500</b> Veff Maxi
DIELECTRIC WITHSTANDING VOLTAGE	<b>1500</b> Veff Mini
INSULATION RESISTANCE	<b>5000</b> M $\Omega$ Mini
HERMETIC SEAL	<b>NA</b> Atm.cm <sup>3</sup> /s
LEAKAGE (pressurized only)	<b>NA</b>
MECHANICAL DURABILITY	<b>500</b> Cycles
WEIGHT	<b>8.96</b> gr
SPECIFICATION	

CABLES : **NOKIA 0.6/2.8 AF75**  
**CAE HD 06280 LSZH**

OTHERS CHARACTERISTICS

CABLE RETENTION	<b>90</b> N Mini
CENTER CONTACT RETENTION	
Axial force - mating end	<b>27</b> N Mini
Axial force - opposite end	<b>27</b> N Mini
Torque	<b>NA</b> cm.N Mini
RECOMMENDED TORQUES	
Mating	<b>NA</b> cm.N
Panel nut	<b>NA</b> cm.N
Clamp nut	<b>NA</b> cm.N

CONNECTOR PARTS	MATERIALS	FINISH	(all values are given ) in micrometers
BODY	BRASS	BBR 2	
OUTER CONTACT			
CENTER CONTACT	BRASS	GOLD 1.3 OVER NICKEL 2.54 OVER COPPER 3	
INSULATOR	PTFE	-	
GASKET	SILICONE RUBBER	-	
OTHERS PIECES	BRASS	BBR 2	

ISSUE <b>0737A00</b>	CREATION DATE <b>09/11/1994</b>	FILE PART-NUMBER <b>92-0104-518</b>
-------------------------	------------------------------------	--



LELEU

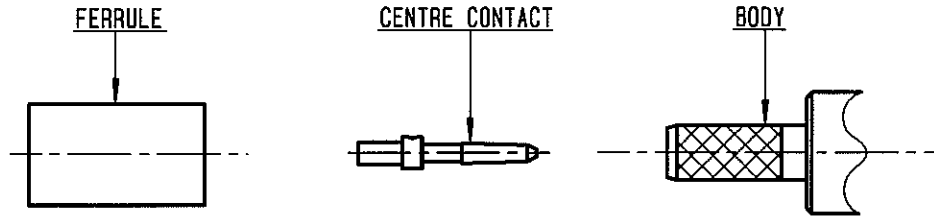
The information given here is subject to change without notice.  
Design changes may be in order to improve the product .

*Connect to the future*



**R142.082.027**

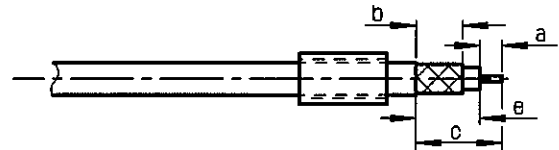
ISSUE 0737 A00 SERIES BNC 75



①

Slide onto the cable the ferrule .  
Strip the cable.

-  
-  
-

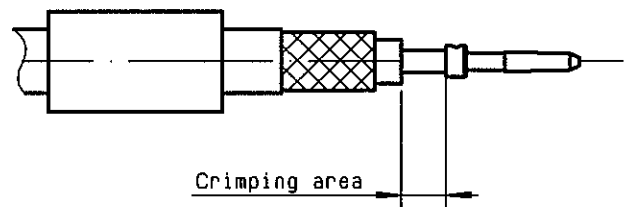


Stripping	a	b	c	d	e
inch	0.197	0.335	0.591	0	0.394
mm	5	8.5	15		10

②

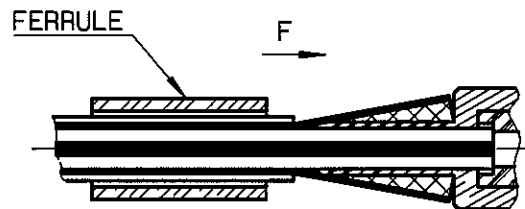
Slide on centre contact until it bottoms against cable dielectrique .  
Crimp centre contact .  
Crimping tool R282 293 000 (M22520/5-01)  
(or crimping tool D&H 10-1022)  
+ dies R282 235 901 (Hex.: .047 )  
(or dies D&H 1013).

-



③

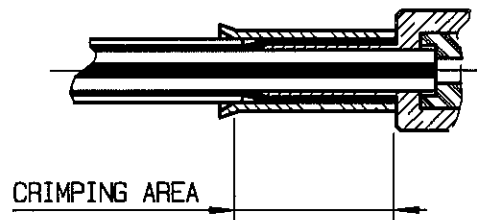
Fan the braid.  
Slide cable into the body until bottoms against insulator .  
Slide ferrule over the braid .  
(In direction F)



④

Crimp the ferrule with crimping tool R 282 293 000 (M22520/5-01)  
(or crimping tool D&H 10-1022)  
+ dies R282 235 901 (Hex.: .217 )  
(or dies D&H 1013).

-  
-



LELEU